

---

*A Unified Approach of Stormwater Management for the City of Atlanta- What we do upstream can help meet EPA Consent Decree Requirements.*

*AUC Stormwater Management Virtual Conference  
Thursday, December 10, 2020*

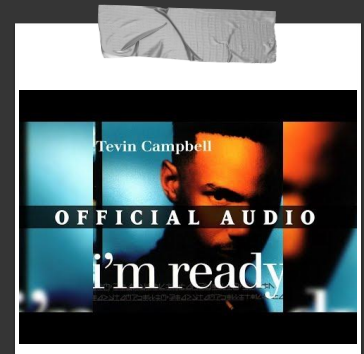
A presentation by Kimberly Scott, Chair of  
NPU-T

---

—

# Gray vs Green Stormwater Management.....

can we all just get along?



# Gray Stormwater Management

Traditional approach to stormwater management has been to plan for even bigger pipes, transfer stations, tunnels, and treatment facilities.



---

# Green Stormwater Management ! one stop shop or not????

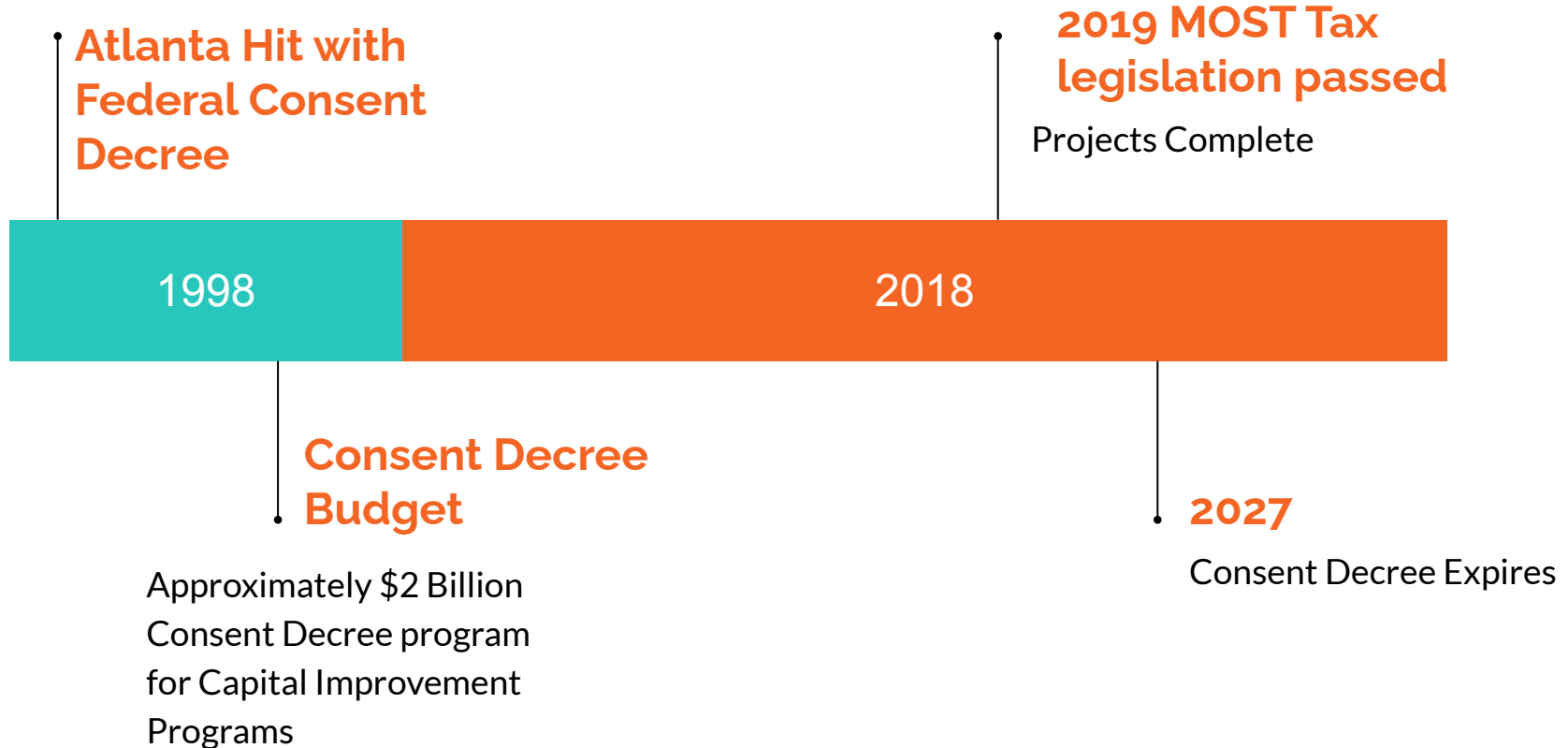
But a second approach is rapidly gaining prominence: green stormwater management. Rather than expanding facilities to meet the ever increasing volume of stormwater runoff, some communities are adopting green approaches that *manage* stormwater runoff, generally on-site or in more natural ways. Green stormwater approaches can reduce the demand for new capital investments by slowing, lowering, or even eliminating the volume of stormwater runoff. They often do so in ways that mimic the natural water cycle: evaporation, absorption, and re-use. And, almost all green approaches make property owners more responsible for their contribution to the problem. The number of communities implementing green infrastructure approaches to managing stormwater has proliferated rapidly in just the last few years



## Thought?

Green Infrastructure  
alone can't solve  
localized flooding in our  
communities!


# Major DWM Milestones





# 1. Goals

- **#1**  
structuring federal consent decree projects that will capture upstream runoff to reduce its impact on-site stormwater retention
- **#2**  
Contain stormwater runoff onsite with a combination of gray and green methodologies.
- **#3**  
developing innovative pricing and financing techniques applicable to site and community blockface.

- 
- **#4**  
implementing demonstration and pilot projects.
  - **#5**  
comprehensive neighborhood scale programs.
  - **#6**  
public education campaigns, and K-12 outreach

# What people are saying

**What's the MOST  
Tax?**

With some of the highest sewer and water utility bills or rates in the country why are we still experiencing flooding in Atlanta?

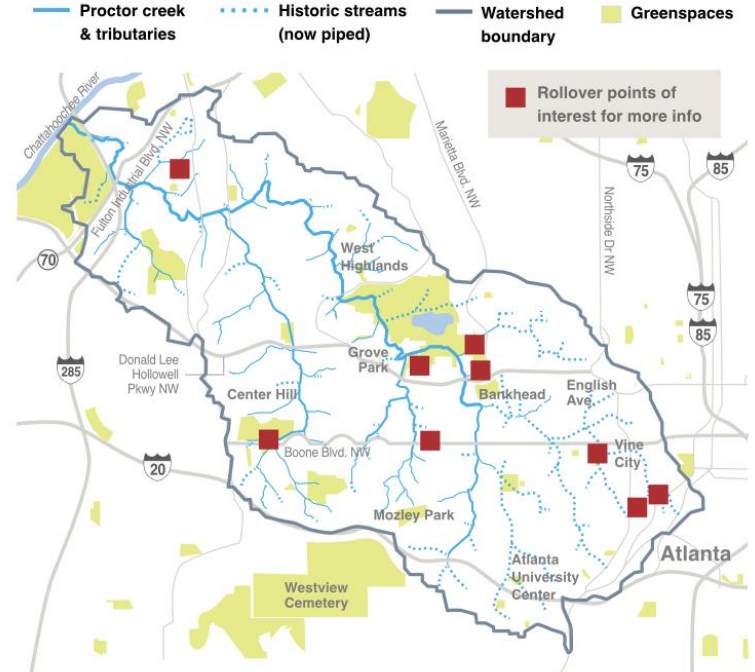
**Will green  
infrastructure  
create  
gentrification?**

# Unified Mindset

Create sustainable and green neighborhoods that combine both gray and green infrastructure while providing a functional amenity. All “hands on deck:” is the only foolproof way to eliminate localized flooding in Atlanta.

## Proctor Creek Watershed

Proctor Creek is entirely inside Atlanta's city limits. It starts in downtown near the Georgia World Congress Center and flows northwest through dozens of neighborhoods until it empties into the Chattahoochee River near the Perimeter.



Source: Erik Fyle/Park Pride

WABE INTERACTIVE / KarBel Multimedia





# The End!

We hope that you enjoyed our unsolicited advice!! For this presentation or nugget drops relevant to community development by utilizing a unified stormwater approach, go to [kimscottmanagement@gmail.com](mailto:kimscottmanagement@gmail.com)

For more about a good read check out this book

